



Leading the world in
PAT testing solutions

Contents

| | |
|--|----|
| Apollo 600 | 1 |
| Supernova Elite | 5 |
| PrimeTest 250 | 6 |
| PrimeTest 100 | 7 |
| PrimeTest 50 | 8 |
| PATGuard 3 The Health and Safety Edition | 9 |
| Accessories | 11 |
| Support & Aftercare | 13 |
| World Leading Electrical Test Solutions | 15 |
| Product Comparison Chart | 16 |

Making your life easier and more efficient

World-Leading Electrical Test Equipment from Seaward

At Seaward Group, we have over 70 years experience in the design and manufacture of innovative electrical test equipment. Today, our first-class range of electrical test equipment serves a wide variety of testing and precision measurement applications.

For the last 30 years we've moved our developments on. Our portable appliance testers are now the benchmark for the portable appliance testing (PAT) market and are trusted by experts worldwide.

Our PAT testing equipment has always been designed with the needs of our customers in mind. Safety in the workplace is of paramount importance and our testers provide the quick and effective key to electrical equipment preventative maintenance programmes.

That's why each Seaward PAT tester is backed by a huge range of accessories, printers, asset management software and technical support. Peace of mind is guaranteed for our customers because they know that help and advice is only a phone call away.



Ideal for:

- Risk based inspection and testing
- Testing all types of electrical appliance
- Recording comprehensive electrical test results
- Recording images of visual inspections
- Recording risk assessments
- Emergency lighting inspection
- Fire alarm inspection

Key Features:**Electrical Test Functions:**

- Mains supply check
- IEC lead test
- Earth test lead null
- Earth continuity (200mA)
- Insulation resistance (250V)
- Insulation resistance (500V)
- PE conductor current (Earth leakage)
- Touch current
- Alternative substitute leakage
- RCD test
- 3 phase leakage
- Earth loop test (Digital reading)
- Point to point testing (Fixed appliances)

General Functions:

- Colour screen
- On board camera
- Compact, light and handheld
- Built in risk assessment
- USB port
- Bluetooth
- QWERTY keypad
- PC download/upload
- Onboard memory
- Battery/ mains powered

NEW Apollo 600

Your Complete Solution to Risk-based PAT Testing

The new Apollo 600 will change the way you manage health and safety compliance

Apollo 600 takes PAT testing to a new level as it integrates PAT testing with risk assessment. This revolutionary tester is the only one that integrates risk assessment so that you can comply with the latest IET Code of Practice. It's an all-in-one solution.

Apollo 600 is a fast, simple-to-use, multi-tasking safety management tool. The built-in risk assessment tool is ideal for evaluating and recording any workplace hazard. Apollo 600 can also produce a variety of testing and inspection reports, including portable appliance testing, fire detection and emergency lighting.

Another invaluable feature is Apollo 600's on-board digital camera. This will enable you to keep visual evidence of your inspections which you can tag against records, sites and locations. Managing comprehensive client records, including test and inspection records, risk assessments and visual evidence is easy with the help of Seaward's PATGuard 3 Health and Safety Edition software.

Apollo 600. Change the way you work

For full details of how this powerful and compact instrument will revolutionise your productivity visit: www.apollo600.com

Apollo 600

Key Benefits:



PAT tester:

Full suite of advanced electrical safety tests



Risk assessment:

For both electrical and universal hazards



On-board camera:

Provides visual evidence to tag against records



Health & Safety forms:

Generates reports and certificates via PATGuard 3 software



▶ Apollo 600 in detail



▶ Risk-based PAT testing

Apollo 600 follows in the footsteps of Seaward's long line of trusted PAT testers, offering a comprehensive suite of fast and accurate electrical safety tests to enable any workplace appliance to be tested, including 3 phase equipment and residual current devices (RCDs). Apollo 600 also enables point to point testing of fixed appliances as required by the 4th edition of the IET Code of Practice for In-Service Inspection and Testing of Electrical Equipment.

In addition to its electrical test features, Apollo 600 has a built-in electrical risk assessment tool which can be used to easily determine a risk-based suggested retest period as required by the IET 4th Edition Code of Practice for In-service Inspection and Testing.

▶ Visual evidence for full traceability

Apollo 600 has a built-in digital camera enabling images taken during visual inspections and risk assessments to be tagged against records in PATGuard 3 software as evidence - making for the most comprehensive and traceable record-keeping system on the market today.



▶ Total health and safety management

Apollo 600 features a built-in universal risk assessment tool allowing workplace hazards to be recorded, risk scores to be calculated and corrective actions to be planned and documented easily.

For those who have responsibility for health and safety inspections outside of portable appliance testing, Apollo 600 also hosts a range of onboard reports for fire detection and emergency lighting, and it's upgradeable to include more - making it an all-in-one solution for the future of health and safety management.



► Superb software for total traceability

Apollo 600 has a large internal memory capable of storing 50,000 records and an additional 2,000 images. Its compatibility with Seaward's PATGuard 3 Health and Safety Edition software means that complete test records including images can be easily managed on a PC.

Easily transfer data to a PC remotely using Apollo 600's Bluetooth function and a compatible mobile phone or tablet; or download results onto a USB flash drive. Alternatively, transfer data directly to PC via USB when back at the office. Once downloaded to PATGuard 3, it is easy to keep track of the history of test and inspection and produce reports, certificates and invoices – offering total peace of mind and quicker, easier management of scheduling inspections and tests.

► Greater efficiency through useful accessories

Apollo 600 is compatible with a range of printers and barcode scanners, further speeding up the process of asset recognition and labelling.

Save time by uploading previously tested asset details into Apollo 600 using PATGuard 3 software - then simply scan the barcodes of assets as you go, Apollo 600 will automatically select the required test sequence appropriate to the scanned asset.



► Apollo packages

Apollo 600 comes with an accessory kit as standard, which includes everything you need to get started.

A professional package is also available, offering all you need for super-efficient and comprehensive health & safety management.

| | Standard Package | Professional Package |
|---|---------------------|----------------------|
| Part Number: | 380A910 (UK) | 380A950 (UK) |
| ■ Apollo 600 | ✓ | ✓ |
| ■ 2x test leads with test probes and clips | ✓ | ✓ |
| ■ 30 day free trial of PATGuard 3 Health and Safety Edition | ✓ | ✓ |
| ■ IEC lead | ✓ | ✓ |
| ■ 110V adaptor | ✓ | ✓ |
| ■ Apollo 600 PAT checkbox | ✓ | ✓ |
| ■ USB download lead | ✓ | ✓ |
| ■ Mains power lead | ✓ | ✓ |
| ■ Quick Start Guide | ✓ | ✓ |
| ■ Support CD-Rom including full user manual | ✓ | ✓ |
| ■ Apollo 600 carry case | ✓ | ✓ |
| ■ Bluetooth printer | | ✓ |
| ■ Bluetooth barcode scanner | | ✓ |
| ■ Carry case for Bluetooth accessories | | ✓ |



Ideal for:

- Testing 110V tools and appliances
- Testing on a 110V or 230V supply
- Testing equipment that requires a flash test e.g. hire equipment

Key Features:

Electrical Test Functions:

- Mains supply check
- IEC lead test
- Earth test lead null
- Earth continuity (100mA)
- Earth continuity (200mA)
- Earth continuity (4A/10A/25A)
- Insulation resistance (250V)
- Insulation resistance (500V)
- PE conductor current (Earth leakage)
- Touch current
- Alternative substitute leakage
- RCD test
- Flash test
- 230V/110V input/output

General Functions:

- QWERTY keypad
- PC download/upload
- Onboard memory
- Mains powered

Part No: 283A936 (UK)

Also available in a kit which includes:

- 30 day free trial of PATGuard 3 Elite software
- Connectors
- Test n Tag printer
- Barcode scanner
- Calibration certificate
- Guide to PAT testing

Part No: 323A910 (UK)

www.seaward.co.uk
Tel: +44 (0) 191 587 8744

Supernova Elite

A comprehensive dual voltage PAT with flash test



Tough

Rugged enclosure can withstand the harshest of environments



Dual voltage

True dual voltage for testing both 230V & 110V appliances, whether the tester is powered by a 230v or 110v supply



Reliable

Proven to be extremely reliable, accurate and hardworking

The Supernova Elite is a ruggedly put together, comprehensive tester that you'll find indispensable. It will carry out a wide range of tests, including flash testing and RCD trip-time. It is the only PAT tester on the market to have true dual voltage capability, meaning it can be powered by 230V or 110V supply whilst carrying out either 230V or 110V tests.

It's packed with incredibly useful features, like a 5000 test record memory, storing locations, user, test status and date which can be downloaded to a PC. It has a serial port for the connection of a barcode reader, printer or both if using our recommended adaptor. It has a large LCD display for easy use, legible walk-through instructions for each test and it downloads fast. The QWERTY keyboard makes entering asset information quick and easy. Asset management is supported by our PATGuard software options.

Supplied as standard with earth lead, 110V adaptor, dual serial port adaptor, 9 way computer lead and flash probe.

For full details of how this comprehensive instrument will revolutionise your productivity visit: www.seaward.co.uk/supernovaelite



Ideal for:

- Low volume testing
- Manually recording measurements
- Equipment requiring a leakage measurement
e.g. equipment with electronic switches
- Testing portable RCDs

Key Features:

Electrical Test Functions:

- Mains supply check
- IEC lead test
- Earth continuity (200mA)
- Insulation resistance (250V)
- Insulation resistance (500V)
- PE conductor current (earth leakage)
- Touch current
- Alternative/substitute leakage
- RCD test
- 3 phase leakage*

General Functions:

- Handheld
- Battery powered

Part No: 382A910 (UK)

Also available in a kit which includes:

- 30 day free trial of PATGuard 3 Elements software
- Durable, purpose-made PATBag
- 110V adaptor
- Training DVD
- Guide to PAT testing
- Reference card
- Business Builder CD
- PAT log book
- 500 pass & 500 fail labels

Part No: 345A927 (UK)

www.seaward.co.uk
Tel: +44 (0) 191 587 8744

PrimeTest 250

Handheld, compact and feature packed to test most workplace appliances



Comprehensive test range

Test range includes RCD trip-time and 3-phase leakage



250V insulation resistance test

Suitable for testing sensitive electrical appliances & surge protected leads



Powered leakage tests

Powered PE & touch leakage tests

The PrimeTest 250 will perform tests required by the IET Code of Practice, including RCD trip-time, protective conductor current and touch current. It also includes a 250V DC insulation test for sensitive electrical appliances and surge protected leads. The PrimeTest 250 is also capable of testing 3-Phase machinery*.

This highly versatile instrument tests most workplace appliances using long-life battery power. When protective conductor current or touch current measurements are required, simply connecting a mains supply will automatically select the correct test sequence.

Supplied as standard with 0.5m extension adaptor, earth lead, probe and clip and a mains lead for leakage testing.

*For 3 phase testing, an accessory is required.

For full details of how this featured packed instrument will revolutionise your productivity visit: www.seaward.co.uk/primetest250



Ideal for :

- Low volume testing
- Manually recording measurements
- Equipment that does not require a leakage measurement

Key Features:

Electrical Test Functions:

- Mains supply check
- IEC lead test
- Earth continuity (200mA)
- Insulation resistance (500V)
- Alternative substitute leakage

General Functions:

- Handheld
- Battery powered

Part No: 344A910 (UK)

Also available in a kit which includes:

- 30 day free trial of PATGuard 3 Elements software
- Durable, purpose-made PATBag
- 110V adaptor
- Training DVD
- Guide to PAT Testing
- Reference card
- Business Builder CD
- PAT log book
- 500 pass & 500 fail labels

Part No: 345A925 (UK)

PrimeTest 100

Handheld unit for testing earth continuity, insulation resistance and substitute leakage



Easy-to-read display

Large LCD display shows clear test results and Pass/Fail indication



Handheld and battery powered

This lightweight tester is extremely portable



Long battery life

Conducts up to 5000 tests before battery requires replacing

A highly useful, functional and diverse tool, the PrimeTest 100 has three operational modes and is an easy-to-use, comprehensive unit. Simply push the relevant button to run through the pre-programmed test sequences for either Class I PAT test, Class II PAT test or IEC Lead test.

Connect the PrimeTest 100 to a power outlet and it will automatically check the socket wiring and mains voltage. Its large digital display shows test result values, as well as a PASS or FAIL indication. Battery powered, it'll help you work quicker and more efficiently.

Supplied as standard with 0.5m extension adaptor, earth bond lead and carry case.

For full details of how this diverse instrument will revolutionise your productivity visit: www.seaward.co.uk/primetest100

www.seaward.co.uk
Tel: +44 (0) 191 587 8744



Ideal for :

- Basic low volume testing

Key Features:

Electrical Test Functions:

- Mains supply check
- IEC lead test
- Earth continuity (200mA)
- Insulation resistance (500V)

General Functions:

- Handheld
- Battery/ mains powered

Part No: 347A910 (UK)

Also available in a kit which includes:

- 30 day free trial of PATGuard 3 Elements software
- Durable, purpose-made PATBag
- 110V adaptor
- Training DVD
- Guide to PAT Testing
- Reference card
- Business Builder CD
- PAT log book
- 500 pass & 500 fail labels

Part No: 345A929 (UK)

PrimeTest 50

Basic Pass/Fail handheld unit for testing earth continuity and insulation resistance of appliances.



Simple to use
Easy-to-use push button operation



Easy-to-read display
Large LCD display shows simple to read Pass/ Fail indication



Handheld and battery powered
This lightweight tester is extremely portable

The PrimeTest 50 is lightweight and portable and features a greatly simplified range of tests. Simply choose the test you need - either earthed appliance, double-insulated appliance or mains cord testing. Its easy-to-read display is simple and registers PASS or FAIL. Connect the PrimeTest 50 to a power outlet and it will automatically check the socket wiring and mains voltage. It doesn't get much simpler. The PrimeTest 50 is an obvious choice if you're looking for a reliable, portable safety tester that's effortless to use.

Supplied as standard with 0.5m extension adaptor, earth bond lead and carry case.

For full details of how this easy to use instrument will revolutionise your productivity visit: www.seaward.co.uk/primetest50



Ideal for :

- Electrical safety data management
- Risk assessment recording and reporting
- Test scheduling
- Professional reporting
- Health & safety data management
- Asset management
- Hire asset management

PATGuard 3 Features:

- Intuitive user interface for efficiency and ease of use
- Tag photos to sites, locations, asset IDs and test results
- Download compatible with a wide variety of PAT testers
- Electrical risk assessment tool quickly determines risk-based retest periods for electrical appliances
- Universal risk assessment tool calculates risk score for any workplace hazard
- Extensive range of detailed and summary reports
- Test and inspection reports for fire detection/alarm systems and emergency lighting - upgradeable to include more
- Auto-scheduler function notifies the user when assets are due for retest
- Create a professional viewer CD for read only access to test records
- Generate professional invoices
- Create customisable exports of test records in CSV format

PATGuard 3 The Health & Safety Edition

The ultimate in total health and safety management.

This intuitive software program enables you to record, store and report on a range of health and safety requirements, including PAT testing, risk assessments and other workplace tests and inspections. It's also useful for tagging records with images as visual evidence, scheduling retest periods and producing professional reports and certificates for total traceability. PATGuard 3 The Health and Safety Edition is compatible with a wide range of portable appliance testers, including Seaward's Apollo 600.

Comprehensive PAT Records

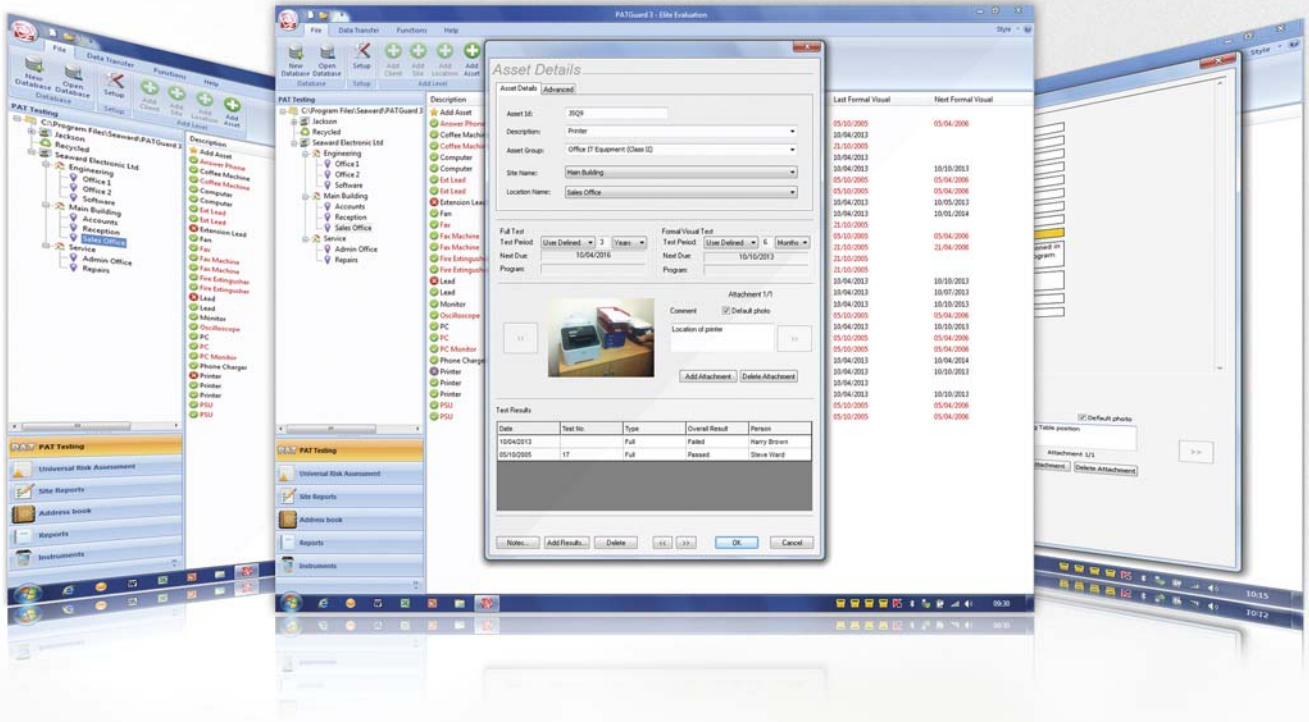
Offers total traceability when it comes to maintaining PAT records, enabling images taken with Apollo 600, or any camera/phone, to be tagged against sites, locations, asset IDs and test results – providing evidence of visual inspection. Tagged images can be included in the vast range of detailed reports that can be created. These are easily stored, printed or emailed.



A Risk-based Approach

The built in electrical risk assessment tool can be used to ensure a risk-based approach is taken to PAT testing; automatically determining retest periods proportionate to risk for assets as required by the IET Code of Practice. The universal risk assessment tool means that it has never been simpler to record details of any workplace hazard, calculate risk scores and schedule corrective actions.





Versions available:

PATGuard 3 Elite

- The Health and Safety Edition

Premier edition. Features all functionality detailed in this section*

Compatible with:

- Apollo 600
- Supernova Elite

PATGuard 3 Elements

- The Health and Safety Edition

Manual data entry edition. Features all functionality detailed in this section, except those related to compatibility with downloadable testers.*

Compatible with:

- Primetest 250
- PrimeTest 100
- PrimeTest 50
- Any non-downloading tester

PATGuard 3 Lite

- Basic downloader

Basic downloader edition. Excludes risk assessment and reporting functionality.

Compatible with:

- Apollo 600
- Supernova Elite

Available to buy online for a 1,3 or 5 year license period.

Complete Health and Safety Management

A range of additional health and safety test and inspection certificates are built into PATGuard 3, allowing records for the inspection of emergency lighting and fire alarm systems to be kept and easily managed. The software program is upgradeable to include more health and safety reports and certificates as updates are released.



Simple Asset Management

PATGuard 3 features a simple checkbox system to help you keep track of assets which are in service. It is also easy to keep asset repair and maintenance records, including any associated costs where applicable. The ability to tag images next to asset records has an added benefit of aiding quick and easy identification of appliances and equipment to make life simpler when it comes to retesting.



Compatible with Apollo 600

PATGuard 3 The Health and Safety Edition is the ultimate companion for Apollo 600, a total safety management tool. When used with Apollo 600 it is simple to upload and download reports, images, test results and risk assessments to and from the tester via Bluetooth or USB connectivity. As well as being compatible with all Seaward PAT testers, PATGuard 3 is also suitable to use with a range of other manufacturers' testers.

For full details of how this intuitive software will revolutionise your productivity and to download a free trial, visit www.seaward.co.uk/pg3trial

*Some features will be made available in future free updates to registered PATGuard 3 subscribers. Please check product version specification on the Seaward website before purchase.

Accessories

A unique range of accessories help you to get the most from your tester. From Bluetooth enabled printers to a variety of pass/fail labels, choose the right accessories to make the job of PAT testing, faster and easier.





► Printers and scanners

A selection of tough and portable label printers interact with Seaward testers to enable direct printing of asset information or test results to label in no time. The barcode scanners also aid faster testing when used in conjunction with a compatible tester.

- **Test n Tag Elite printer** Robust and compact, connects via Bluetooth to Apollo 600. (Part No: 339A970)
- **Test n Tag printer** Prints a variety of different labels for Supernova Elite. (Part No: 308A924)
- **Bluetooth scanner** Ideal for use with Apollo 600, fast and compact label scanning. (Part No: 339A923)
- **CCD scanner** Input and access data quickly into Supernova Elite. (Part No: 194A922)

Seaward stock a variety of printer labels and cartridges –
Go to www.seaward.co.uk for details or call +44 (0) 191 587 8744.



► Leads and Adaptors

Testing different types of workplace appliances may mean that different leads and adaptors are required.

- **NTB-1 RCD isolator** Prevents tripping the main RCD during RCD trip time tests using the PrimeTest 250. (Part No: 372A953)
- **3 Phase leakage and earth continuity adaptor** Enables leakage testing on 3 phase machinery, plant and equipment. (16A Part No: 391A920 / 32A Part No: 391A910)
- **230/110V adaptor** allows earth continuity and insulation resistance measurements to be made on 110V equipment. (Supernova Specific Part No: 281A075 / All other models: 270A076)
- **3 Phase adaptors** (available in 16 & 32 Amp and 4 or 5 pin configuration) allows earth continuity and insulation resistance measurements to be made on 3 phase equipment using PAT testers with a standard UK 240V test socket. (16A 4 Pin Part No: 209A910 / 16A 5 Pin Part No: 209A911 / 32A 4 Pin Part No: 209A912 / 32A 5 Pin Part No: 209A913)

Go to www.seaward.co.uk or call +44 (0) 191 587 8744 to order yours today.



► Verification Units

Use a Seaward verification unit to carry out performance checks between periodic calibration of your tester.

- **PAT checkbox** A safe and simple way to check your PAT tester. (Part No: 227A910)
- **PowerCheck** Suitable for verifying PAT and installation testers. (Part No: 369A910)

► PAT Testing Labels

For all your replacement labels, Seawards supplies a variety to suit any requirement.

- **1000 x PASS labels** Paper labels for visual identification that an electrical appliance has passed the relevant electrical safety tests. (Part No: 91B038)
- **1000 x FAIL labels** These high visibility labels are designed for use on items that have failed the PAT test (ie. formal visual inspection and / or electrical safety tests). (Part No: 91B311)
- **100 x Rhinotags** Almost indestructible, ideal for use in demanding environments. (Part No: 91B309)
- **250 x Barcode appliance no. labels** Printed white labels containing an individual appliance number and barcode used for marking appliances. (Part No: 194A307)



Please check the compatibility of accessories with testers, using the comparison chart on page 16 or call +44 (0) 191 587 8744.



Support & Aftercare

At Seaward we take pride in giving you all of the tools to help you do your job.

Forums

Visit our online forums for instant support, advice and industry-related discussions from our technical experts and others in the Seaward community.

www.seaward.co.uk/forum

Videos

Interactive videos give you visual help and guidance.

www.seaward.co.uk/videos

How-to guides

Our how-to guides include step-by-step instructions to get the most from your tester.

www.seaward.co.uk/faqs

Datasheets

Our datasheets include a full product specification helping you to decide which product is right for you.

Software Trials

You can download a free software trial of PATGuard 3 now from:

<http://www.seaward.co.uk/PG3trial>

Firmware updates

Firmware updates are available from:

www.seaward.co.uk/firmware



Online forums

www.seaward.co.uk/forum



Downloadable Datasheets

Available for all of the products on our website

www.seaward.co.uk
Tel: +44 (0) 191 587 8744



Guidance booklets

Our range of guidance booklets offer advice on best practice for a variety of test and measurement applications.

www.seaward.co.uk/faqs

Brochures

Our brochures and catalogues give you a detailed insight into all the products and services we offer.

Technical support

To research FAQs or to ask your own bespoke question, visit:

www.seaward.co.uk/faqs

Training

We offer a number of training courses designed to support those in the PAT testing industry, some of which are City & Guilds approved. We also offer product training to ensure you get the most out of your Seaward product.

www.seaward.co.uk/training

Service, Calibration & Repair

Calibrationhouse takes care of your test and measurement equipment by providing calibration services (including on-site calibration), service, spares and repairs. Contact us for hassle-free quotations at competitive prices.

www.calibrationhouse.com



Guidance booklets
www.seaward.co.uk/faqs



Videos
www.seaward.co.uk/videos



World Leading Electrical Test Solutions

Seaward Group provides electrical test and measurement instruments and services. Our products meet the demands of all types of safety legislation and standards. We are an international market leader in a number of highly technical market sectors. We pride ourselves on high quality product design and manufacturing.

We believe in putting you, the international customer, at the heart of everything we do. Our multi-lingual customer services department, overseas technical support centres and global distribution network all help us to excel.

Rigel Medical, a Seaward Group company, currently holds The Queen's Award for Enterprise, one of the most prestigious awards that a UK-based company can achieve.

| Seaward | Clare | Cropico | Rigel | Solar | Calibrationhouse |
|---|---|---|--|---|---|
|  |  |  |  |  |  |
| PAT, installation and high voltage test and measurement solutions | Test solutions for electrical manufacturers and hire companies | High precision resistance and temperature measurement instruments | Advanced solutions for testing biomedical equipment | Safe, efficient test solutions for PV installers | Taking care of your test and measurement equipment |
| www.seaward.co.uk | www.clare.co.uk | www.cropico.com | www.rigelmedical.com | www.sewardsolar.com | www.calibrationhouse.com |

Our six brands operate to the same high standards; innovating and enhancing electrical safety testing in their individual markets.

www.seaward-group.com

Comparison Chart

| | Apollo 600 | Supernova Elite | PrimeTest 250 | PrimeTest 100 | PrimeTest 50 |
|--|-----------------------------|------------------------|------------------|---------------|--------------|
| General functions | | | | | |
| Colour Screen | ✓ | | | | |
| On board camera | ✓ | | | | |
| Built in risk assessment | ✓ | | | | |
| USB Port | ✓ | | | | |
| Bluetooth | ✓ | | | | |
| QWERTY Keypad | ✓ | ✓ | | | |
| PC Download/Upload | ✓ | ✓ | | | |
| Onboard memory | 50,000 assets + 2000 photos | 5000 | | | |
| Handheld | ✓ | | ✓ | ✓ | ✓ |
| Battery/Mains Powered | Mains or battery | Mains | Battery | Battery | Battery |
| Electrical test functions | | | | | |
| Mains Supply Check | ✓ | ✓ | ✓ | ✓ | ✓ |
| IEC Lead Test | ✓ | ✓ | ✓ | ✓ | ✓ |
| Earth Test Lead Null | ✓ | 4-Wire | | | |
| Earth Continuity (100mA) | | ✓ | | | |
| Earth Continuity (200mA) | ✓ | ✓ | ✓ | ✓ | ✓ |
| Earth Continuity (4A/10A/25A) | | ✓ | | | |
| Insulation Resistance (250V) | ✓ | ✓ | ✓ | | |
| Insulation Resistance (500V) | ✓ | ✓ | ✓ | ✓ | ✓ |
| PE Conductor Current (Earth Leakage) | ✓ | ✓ | ✓ | | |
| Touch Current | ✓ | ✓ | ✓ | | |
| Alternative Substitute Leakage | ✓ | ✓ | ✓ | ✓ | |
| RCD Test | ✓ | ✓ | ✓ | | |
| Flash Test | | ✓ | | | |
| 3 phase leakage | Requires adaptor | | Requires adaptor | | |
| 230V/110V INPUT/OUTPUT | | ✓ | | | |
| Point to Point testing (fixed appliances) | ✓ | | | | |
| Software compatibility | | | | | |
| PATGuard 3 Elite - The Health and Safety Edition | ✓ | ✓ | | | |
| PATGuard 3 Elements - The Health and Safety Edition | | | ✓ | ✓ | ✓ |
| PATGuard 3 Lite - Basic downloader | ✓ | ✓ | | | |
| Printer and scanner compatibility | | | | | |
| Test n Tag Elite printer | ✓ | ✓ (via serial lead) | | | |
| Test n Tag printer | | ✓ | | | |
| Bluetooth barcode scanner | ✓ | | | | |
| CCD barcode scanner | | ✓ | | | |
| Leads and adaptor compatibility | | | | | |
| 230/110V adaptor | ✓ | N/A | ✓ | ✓ | ✓ |
| 3 phase adaptors (delta 4 pin 16A/32A, star 5 pin 16A/32A) | ✓ | ✓ | ✓ | ✓ | ✓ |
| 3 phase leakage and earth continuity adaptor | ✓ | | ✓ | | |
| NTB-1 RCD Isolator | N/A | N/A | ✓ | | |
| Verification unit compatibility | | | | | |
| PAT checkbox | N/A | ✓ | ✓ | ✓ | ✓ |
| Apollo checkbox | ✓ | | | | |
| PowerCheck 1557 | ✓ | ✓ | ✓ | ✓ | ✓ |

Seaward, Bracken Hill, South West Industrial Estate,
Peterlee, County Durham, SR8 2SW United Kingdom

Tel: +44 (0) 191 587 8744 **Fax:** +44 (0) 191 586 0227

Email: sales@seaward.co.uk **Web:** www.seaward.co.uk

[@SeawardPAT](https://twitter.com/SeawardPAT) [in](https://www.linkedin.com/company/seaward-group) Find Seaward Group on LinkedIn

