

TORSO-ONE

A true hybrid. Cart-based performance inside a hand carried device.



EchoNous developed the Kosmos platform taking the capabilities of powerful high end 64/128 channel systems and engineering them into a sophisticated hand-carried tool to support point of care physicians, with diagnostic quality images and advanced feature sets.

Kosmos Torso-One brings unprecedented ultrasound performance by using cutting-edge, proprietary and innovative Piezoelectric sensor technologies (PZT).

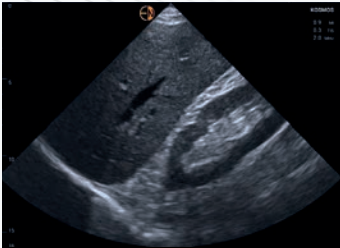
All hardware components in Kosmos are manufactured with ruggedized high-reliability. Kosmos Torso-One weighs about 225 grams and will withstand a 1 meter drop.

Built for real-life patient situations

Patients inevitably come in all shapes and sizes, presenting with various types of pathologies. Kosmos is demonstrably effective on all body types (from thin to obese) including the most challenging. The proof is in the images.

Continuous and Pulse Wave Doppler

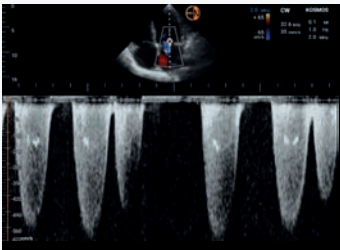
With CW and PW capabilities you can acquire valuable, in-depth information at the bedside to make more confident patient management decisions.



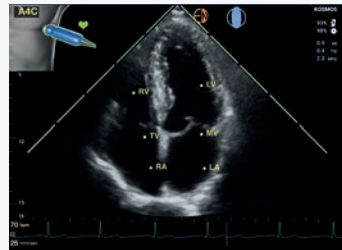
Abdominal



Cardiac



CW



Trio

Specification	
Footprint	20.7 mm x 16 mm
2D frequency	2.0-5 MHz
Weight	10.2 oz
Cable length (connected to the Bridge)	6 ft
Exam types	Cardiac, Lung, Abdomen
Modes	2D, Color-Mode, M-Mode, PW, CW
2D measurements	Ellipse, distance
Doppler measurements	Slope and Velocity
Depth	1 cm-30 cm
Maximum frame rate	28 fps



Connect

Connects to Kosmos Bridge proprietary ultrasecure platform or Android S6, S7*



Durable

Tough materials to protect your product in catastrophic events



5-year warranty

Industry standard 5 year warranty for Torso-One and Bridge



kosmosplatform.com | echonous.com

*Coming soon

The Trio is a real-time automatic image labeling, grading and guidance system to enable the collection of images by healthcare practitioners, including those who are not trained in sonography, to address urgent image analysis needs during the declared COVID-19 public health emergency. The Trio is intended to be used by qualified healthcare professionals or under the supervision or in-person guidance of a trained or licensed healthcare professional. This feature has not been cleared by the FDA.