

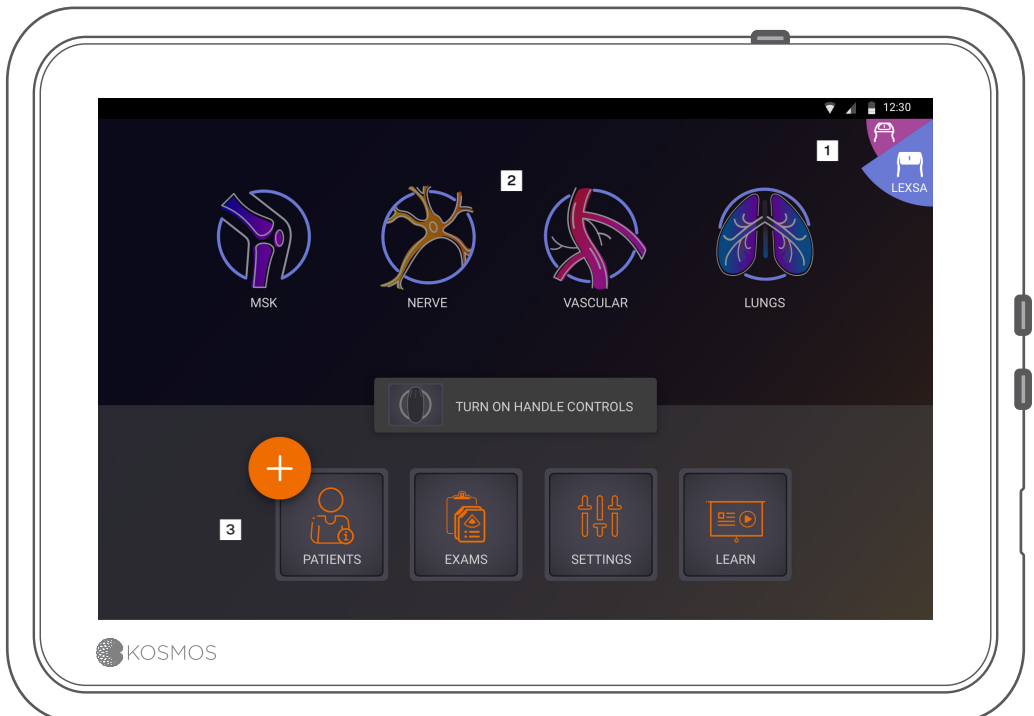


Quick Guide

Kosmos Lexsa

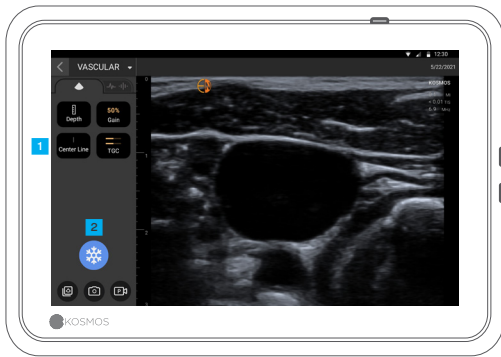
Homescreen

- 1 Switch probes (tap to switch between probes)
- 2 Imaging (MSK, Nerve, Vascular, and Lungs)
- 3 Patients, Exams, Settings and Tutorial Videos



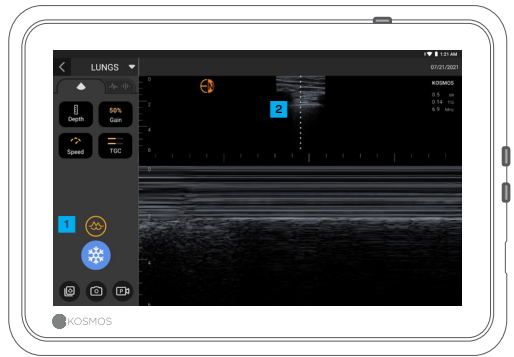
Imaging

B-Mode



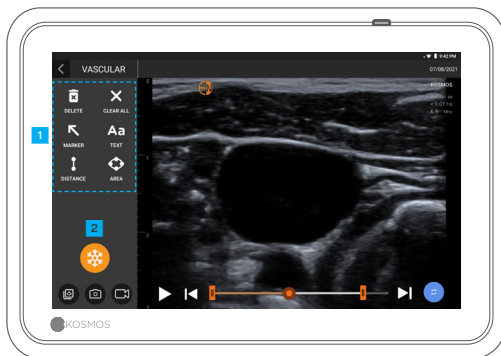
- 1 Center line
- 2 Freeze

M-Mode



- 1 M-mode is only available in the Lungs preset
- 2 M-line

Freeze



- 1 Annotations
- 2 Unfreeze

Contact

Customer Support

Call 1-844-854-0800
Email support@echonous.com

⚠ **Caution:** Federal (United States) law restricts this device to sale by or on the order of a physician.

Note: Not all features are available in all markets. Reference the user guide of your region or country for all available features before use.