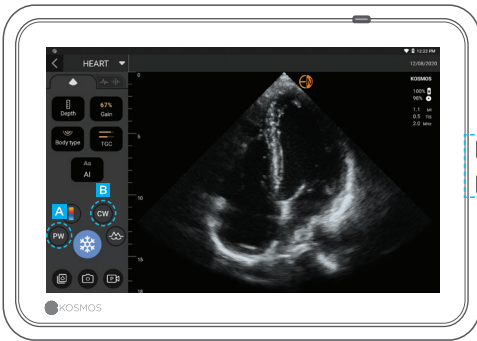


PW/CW Quick Guide

B Mode



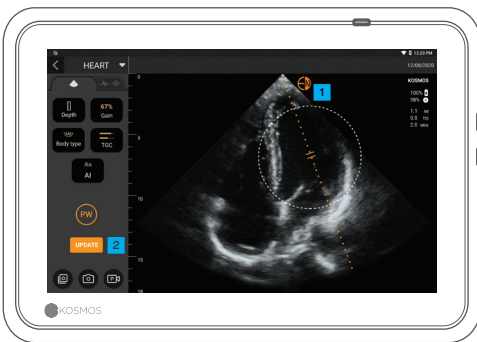
A PW mode

B CW mode

Both PW and CW modes are available with or without Color mode.

Adjust the volume to hear PW and CW signals.

PW Mode



1 Move the circle to place the gate or line in the desired location.

2 Tap Update

Refer to user guide before use.

⚠ **Caution:** Federal (United States) law restricts this device to sale by or on the order of a physician.

Doppler Live vs B Live



- Tap to toggle between B-Live and Doppler Live.
- Move the baseline

CW Mode



Similarly you can acquire CW signal by tapping on the CW mode button.

- Do not forget to adjust the focal point to get the optimal waveform.

PW/CW Cine Review



When you freeze, in addition to the text and marker annotations, you can also measure:

- 1 Slope
- 2 Velocity

Note: Not all features are available in all markets. Reference the user guide of your region or country for all available features before use.